

# DUTCH 2583

## De Grendel Dutch ET

Reg No: 2011622996

Breeder: Sir David Graaff

Born: 12-10-2005



Dutch

### RAUL

- Italy's top rear udder bull
- High protein

### JOCKO BESN

- World's most successful sire
- Outcross in South Africa

### HOL-STIENS DECORA

87 pt

	KgM	%B	%P
2.00	9 656	4,41	3,49

### HOL-STIENS DECIBEL

87 pt

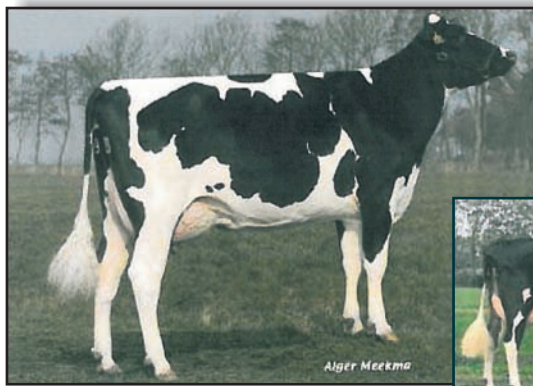
	KgM	%B	%P
2.01	10 088	4,52	3,46

### PROGENY TEST DATA - PRODUCTION

Daughters: 8 + 4 RIP	
Estimated Breeding Values	
Milk	+880kg
Butterfat	+30kg
BF. % Diff	- 0,04
Protein	+37kg
Prot. % Diff	+0,09
BVI	108
Udderhealth index	90
Reproduction	95
Calving Ease	+1



Debra, great granddam of Dutch



Hol-stiens Decora, dam of Dutch



Hol-stiens Destiny, sister of Dutch



Paardewater Dutch 0824, daughter of Dutch

- Dream debut but needs more daughters to be official

- Very high production, with positive protein percentages

- Outcross pedigree, from the Pen Col-D family

- Ideal mating for your BW Marshalls like Nokia, Toystory, Buckeye, etc

### PROGENY TEST DATA - TYPE

Standard deviations for Linear Traits

Daughters: 9

		2	1	0	1	2		
Rump Height	Short						High	0.59+
Chest Width	Narrow						Wide	0.03+
Body Depth	Shallow						Deep	0.40+
Angularity	Round						Sharp	0.66+
Rump Angle	High						Low	0.87 -
Rump Width	Narrow						Wide	0.02 -
Rear Legs Rear View	Toes out						Toes in	0.24+
Rear Legs Side View	Posty						Sickled	0.02 -
Foot Angle	Shallow						Steep	0.19 -
Fore Udder Attachment	Loose						Strong	0.46 -
Front Teat Placement	Wide						Close	0.20 -
Front Teat Length	Short						Long	0.89+
Udder Depth	Deep						Shallow	0.64 -
Rear Udder Height	Low						High	1.00+
Rear Udder Width	Narrow						Wide	1.37+
Median Ligament	Weak						Strong	0.54+
Udder Composite								0.58+
Functional Conformation								0.86+