

HARDY 2582

De Grendel Hardy

Reg No: 2011644073

Breeder: Sir David Graaff

Born: 16-10-2005

STADEL - RED

- High solids percentages
- Great type (112)
- Sire of the best Red bulls
- Longevity (113)

T & G LENA 53-R

EX 90	KgM	%B	%P
2.02	8 914	4.49	3.61
4.00	13 311	4.52	3.45
5.11	10 829	4.65	3.26

WINLUKE

- High solids percentages

LENA 42

VG 86	5 lactations best is:	%B	%P
5.04	10 259	4.17	3.40

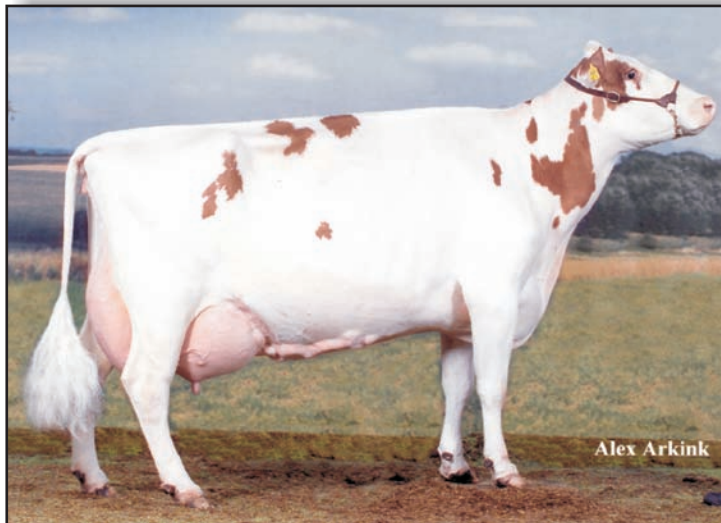


Hardy

PROGENY TEST DATA - PRODUCTION

Daughters: 27 + 10 RIP	
Estimated Breeding Values	
Milk	- 48kg
Butterfat	+8kg
BF. % Diff	+0,11
Protein	+7kg
Prot.% Diff	+0,09
BVI	102
Udderhealth index	93
Reproduction	96

Calving Ease	+1
--------------	----



Lena 53, dam of Hardy

- High solids
- Total outcross
- Great type runs in the family



Lena 63, full sister to Hardy and NRM Champion

PROGENY TEST DATA - TYPE

Standard deviations for Linear Traits

Daughters: 6

		2	1	0	1	2	
Rump Height	Short						High 0.40+
Chest Width	Narrow						Wide 0.00+
Body Depth	Shallow						Deep 0.24+
Angularity	Round						Sharp 0.09-
Rump Angle	High						Low 0.50+
Rump Width	Narrow						Wide 0.08-
Rear Legs Rear View	Toes out						Toes in 0.47+
Rear Legs Side View	Posty						Sickled 0.15-
Foot Angle	Shallow						Steep 0.17+
Fore Udder Attachment	Loose						Strong 1.04+
Front Teat Placement	Wide						Close 0.06-
Front Teat Length	Short						Long 0.16+
Udder Depth	Deep						Shallow 0.88+
Rear Udder Height	Low						High 0.20+
Rear Udder Width	Narrow						Wide 0.11+
Medial Ligament	Weak						Strong 0.12-
Udder Composite							1.05+
Functional Conformation							1.28+